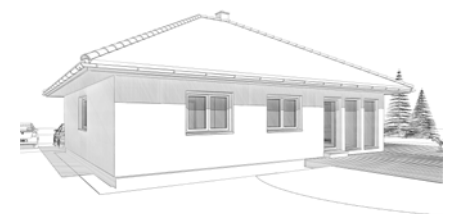
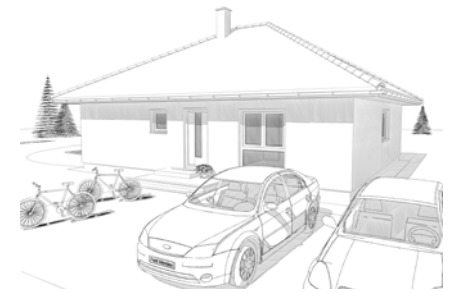
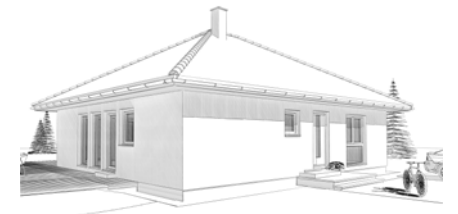
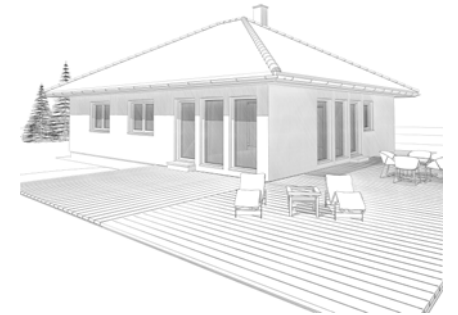


Dachform
Walmdach 25°, Vollgeschoß

Nettogrundrissfläche
Erdgeschoß 105,51 m²
Summe 105,51 m²

Bebaute Fläche 127,56 m²



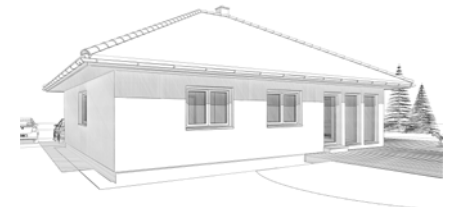
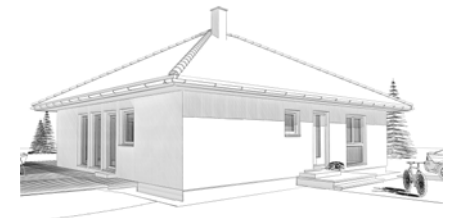
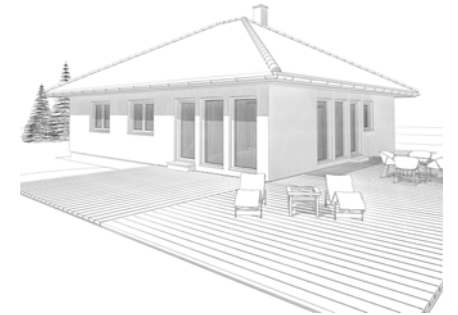
Dachform

Walmdach	25°, Vollgeschoß
Gebäudehöhe	3,41 m
Traufenhöhe	2,92 m
Firsthöhe	5,87 m
ab Oberkante Fundament - 18,5cm FB-Aufbau	

Nettogrundrissfläche

Erdgeschoß	105,51 m ²
Summe	105,51 m ²

Bebaute Fläche	127,56 m ²
----------------	-----------------------



Dachform

Walmdach	25°, Vollgeschoß
Gebäudehöhe	3,41 m
Traufenhöhe	2,92 m
Firsthöhe	5,87 m
ab Oberkante Fundament - 18,5cm FB-Aufbau	

Nettogrundrissfläche

Erdgeschoß	104,90 m ²
Summe	104,90 m ²

Bebaute Fläche	127,56 m ²
----------------	-----------------------