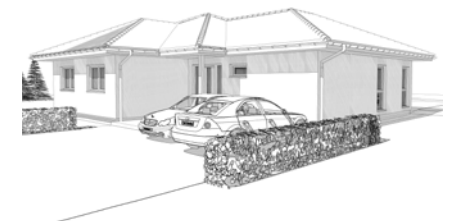
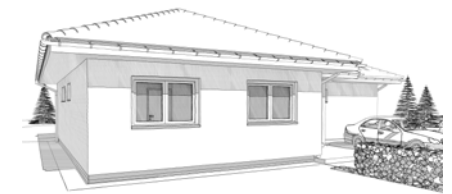
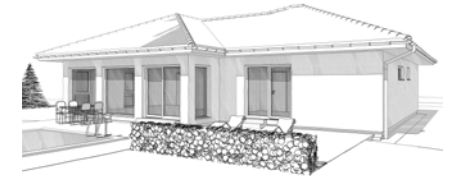
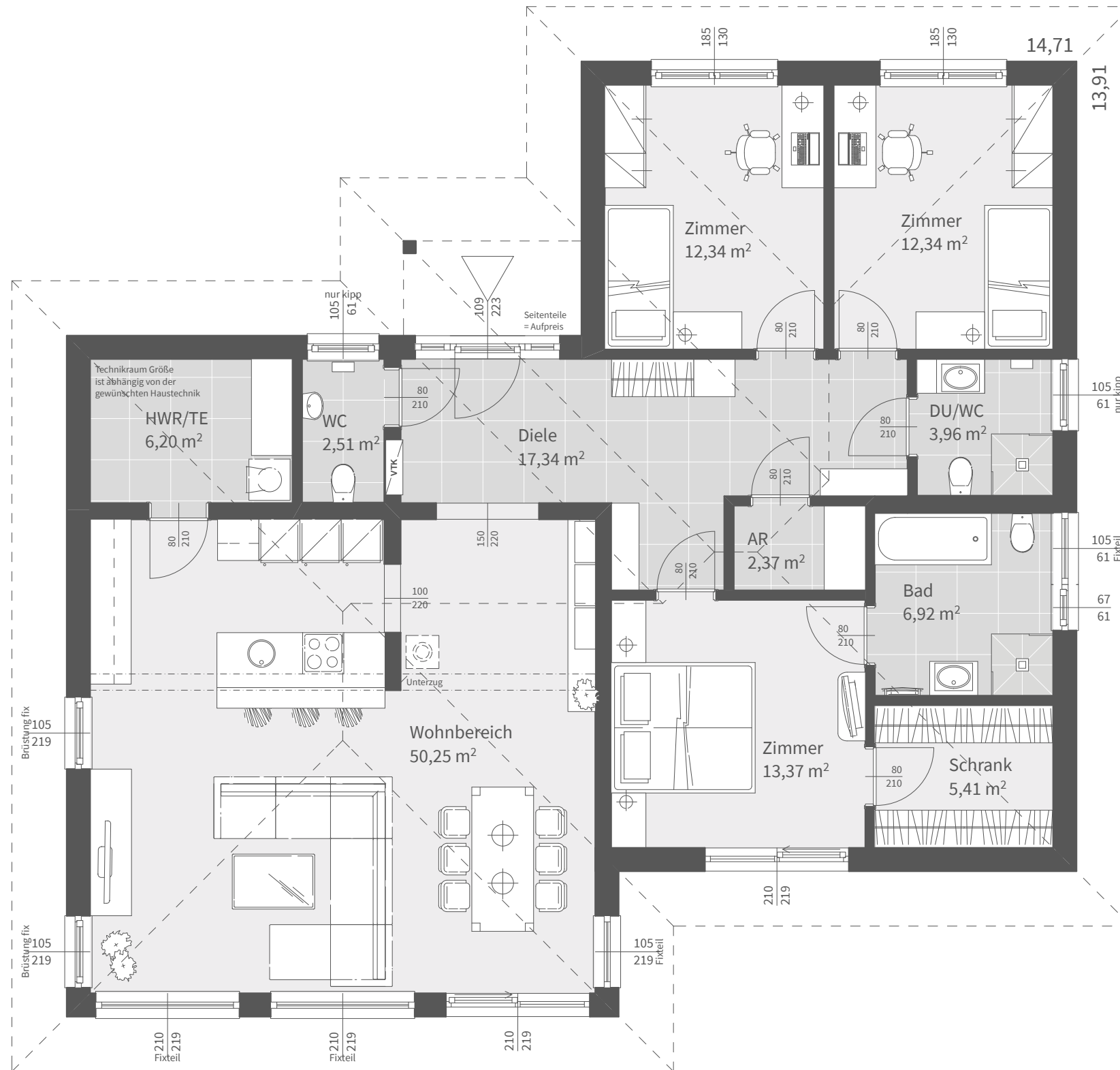


Dachform	
Flachdach	3%, Vollgeschoß
Walmdach	25°, Vollgeschoß

Nettogrundrissfläche	
Erdgeschoß	133,01 m <sup>2</sup>
Summe	133,01 m <sup>2</sup>

Bebaute Fläche 160,40 m<sup>2</sup>



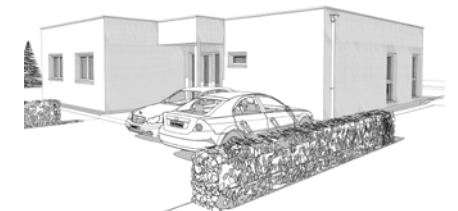
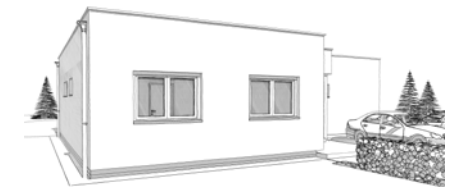
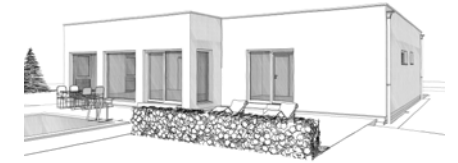
### Dachform

Walmdach	25°, Vollgeschoß
Gebäudehöhe	3,41 m
Traufenhöhe	2,92 m
Firsthöhe	5,60 m
ab Oberkante Fundament - 18,5cm FB-Aufbau	

### Nettogrundrissfläche

Erdgeschoß	133,01 m <sup>2</sup>
Summe	133,01 m <sup>2</sup>

Bebaute Fläche 160,40 m<sup>2</sup>



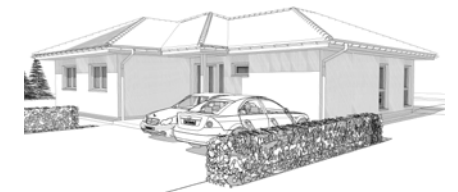
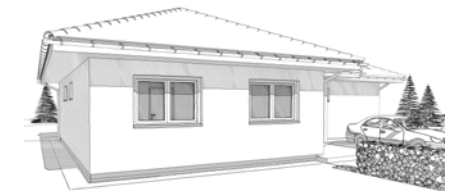
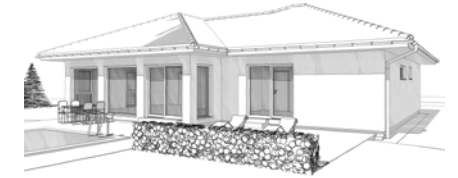
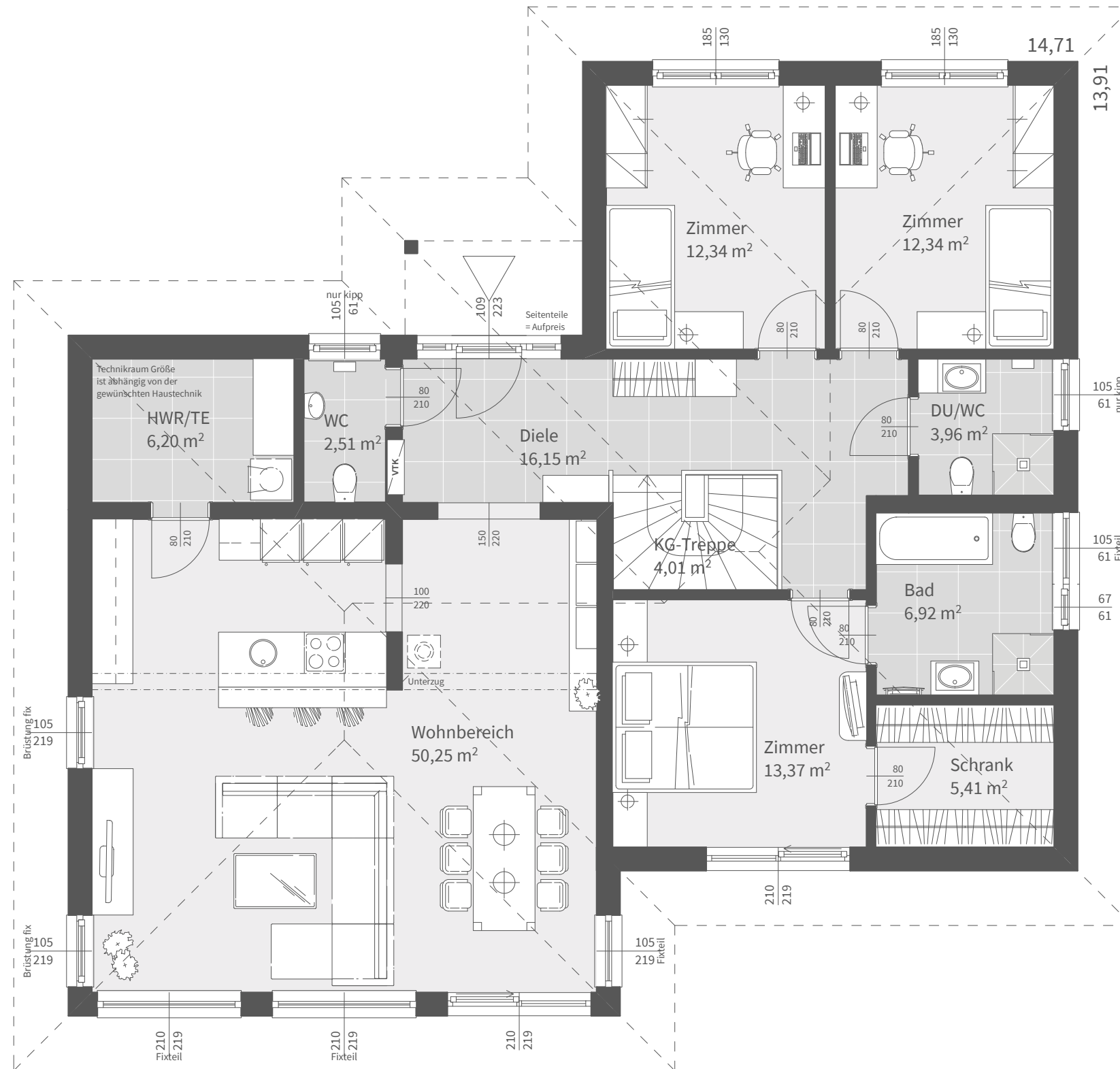
### Dachform

Flachdach	3%, Vollgeschoß
Gebäudehöhe	3,54 m
Traufenhöhe	3,05 m
Firsthöhe	3,54 m
ab Oberkante Fundament - 18,5cm FB-Aufbau	

### Nettogrundrissfläche

Erdgeschoß	133,01 m <sup>2</sup>
Summe	133,01 m <sup>2</sup>

Bebaute Fläche 160,40 m<sup>2</sup>



### Dachform

Walmdach	25°, Vollgeschoß
Gebäudehöhe	3,41 m
Traufenhöhe	2,92 m
Firsthöhe	5,60 m
ab Oberkante Fundament - 18,5cm FB-Aufbau	

### Nettogrundrissfläche

Erdgeschoß	133,46 m <sup>2</sup>
Summe	133,46 m <sup>2</sup>

Bebaute Fläche 160,40 m<sup>2</sup>

